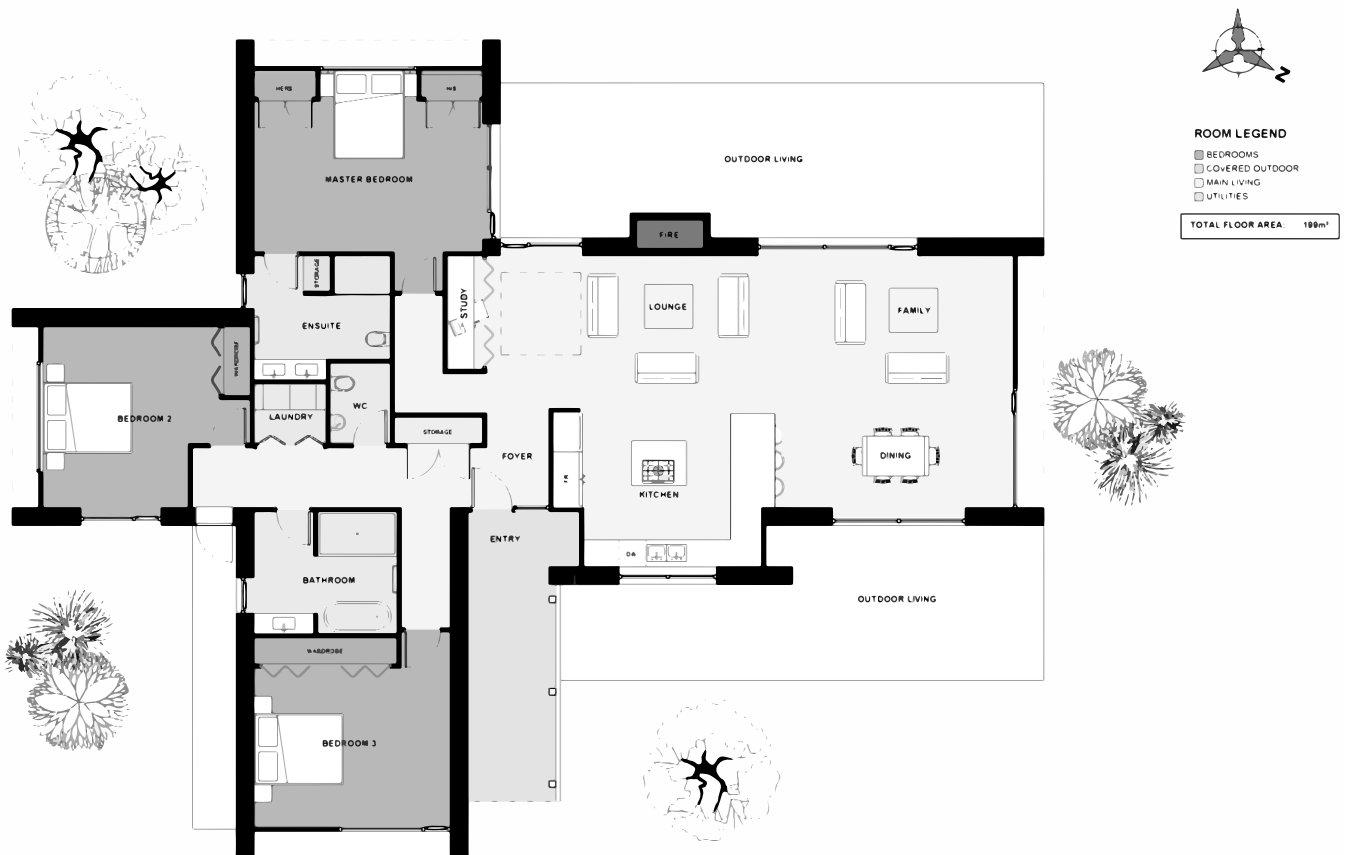





The 'Methvan' is modern and edgy with its extruded portal form and standing seam roof/ wall cladding finish. 3 Separate rooms are smartly positioned in a semi symmetrical layout leaving the plumbing grouped together at the core. Open plan living is in the largest wing bringing together the kitchen, fireplace, dining, 2 lounge layouts and study making heating/ air conditioning a single room effort. Sliding doors open this main space out to the courtyard giving alfresco flow.



Floor Area: 199m²

 0
  3
  2
  23.3m
  18.4m